

Water Weekly

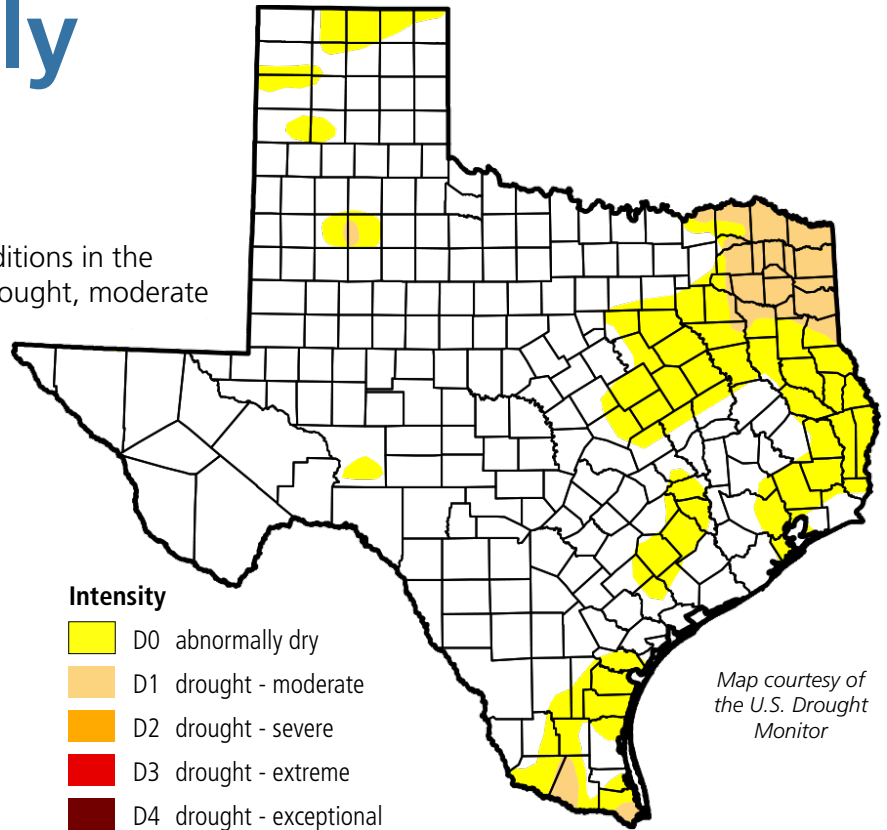
For the week of 10/17/16

Water conditions

The past week saw an expansion of dry conditions in the state with the establishment of a regional drought, moderate in strength, in northeast Texas. Twenty-two counties in northeast Texas are now affected. Statewide reservoir storage is at 84 percent full, five percentage points above normal for this time of year.

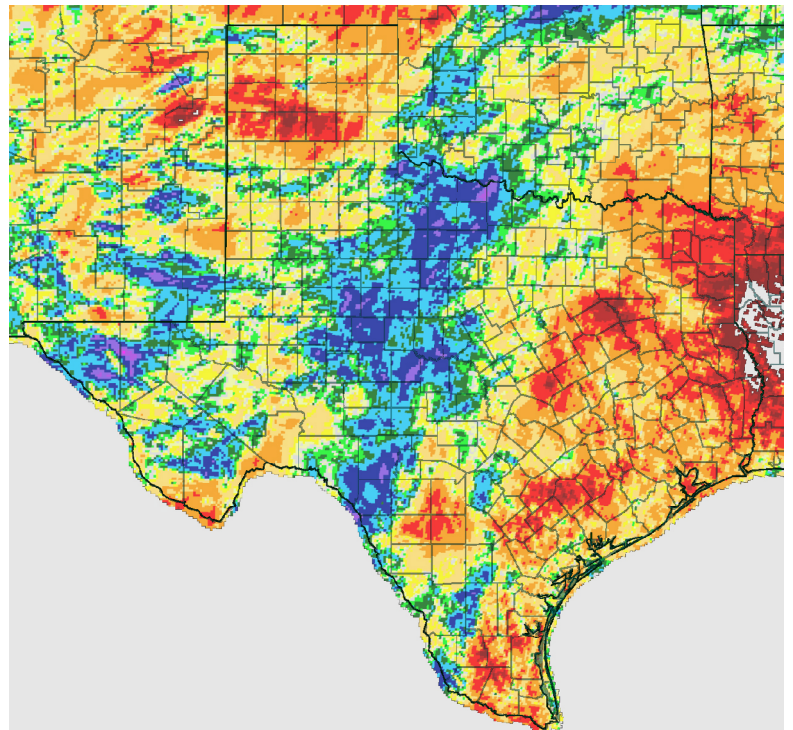
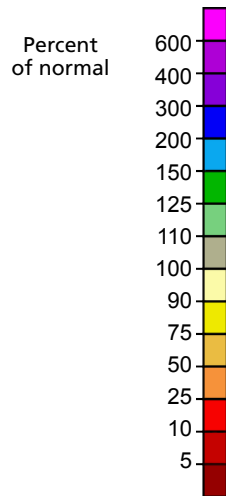
Drought conditions

- ◆ 4% now
- ◆ 1% a week ago
- ◆ 0% three months ago
- ◆ 47% a year ago



30-day percent precipitation

Over the last 30 days, much of East Texas received less than 50 percent of normal rainfall with much of northeast Texas receiving less than 25 percent of normal rainfall.



Map courtesy of NOAA

Written by Dr. Robert Mace — Dr. Robert Mace is the TWDB Deputy Executive Administrator for Water Science and Conservation. Robert has a B.S. in Geophysics, an M.S. in Hydrology, and a Ph.D. in Hydrogeology. He has been at TWDB since 1999.

Tulsi Oberbeck, Governmental Relations | tulsi.oberbeck@twdb.texas.gov | 512-463-4864
Kimberly Leggett, Media Relations | kimberly.leggett@twdb.texas.gov | 512-463-5129