

Water Weekly

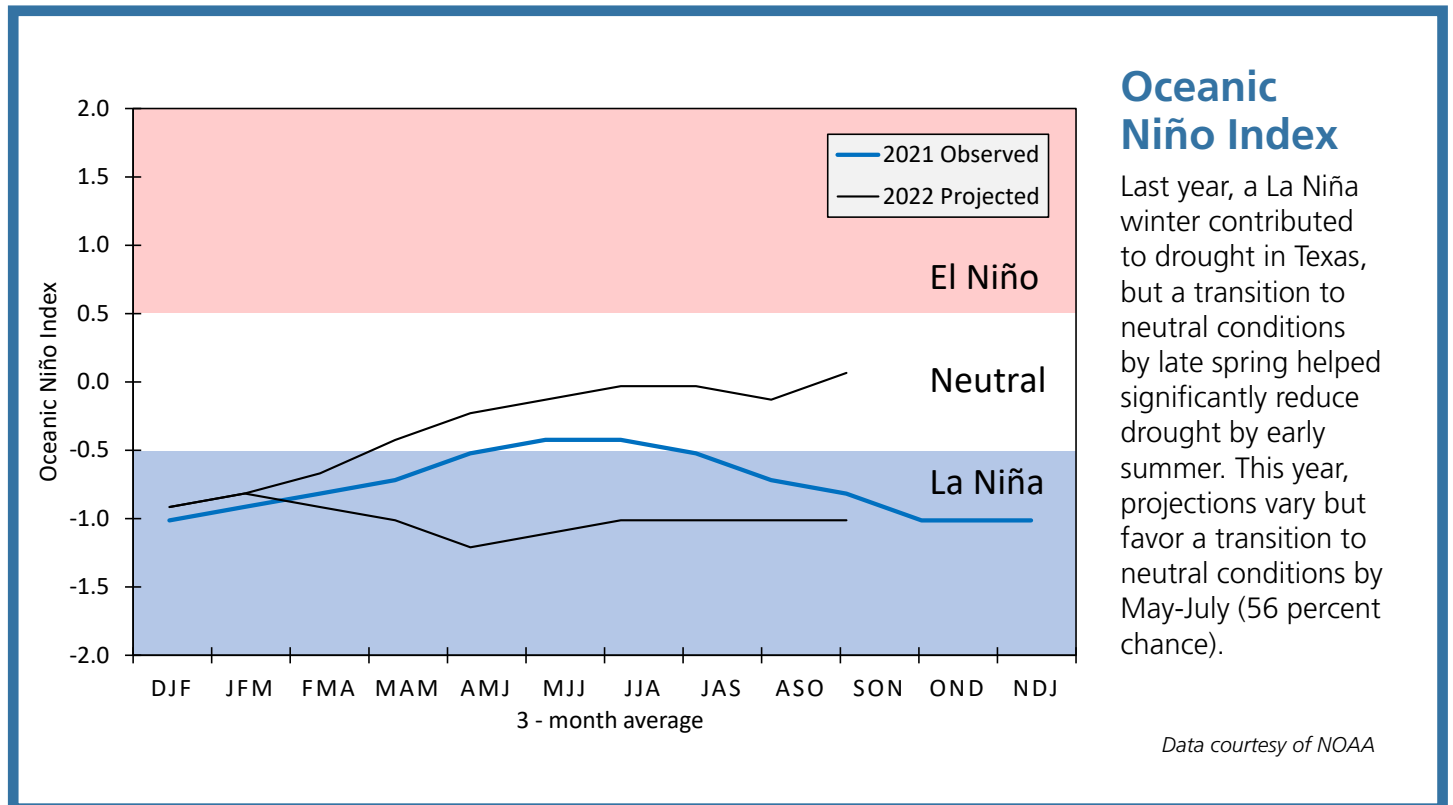
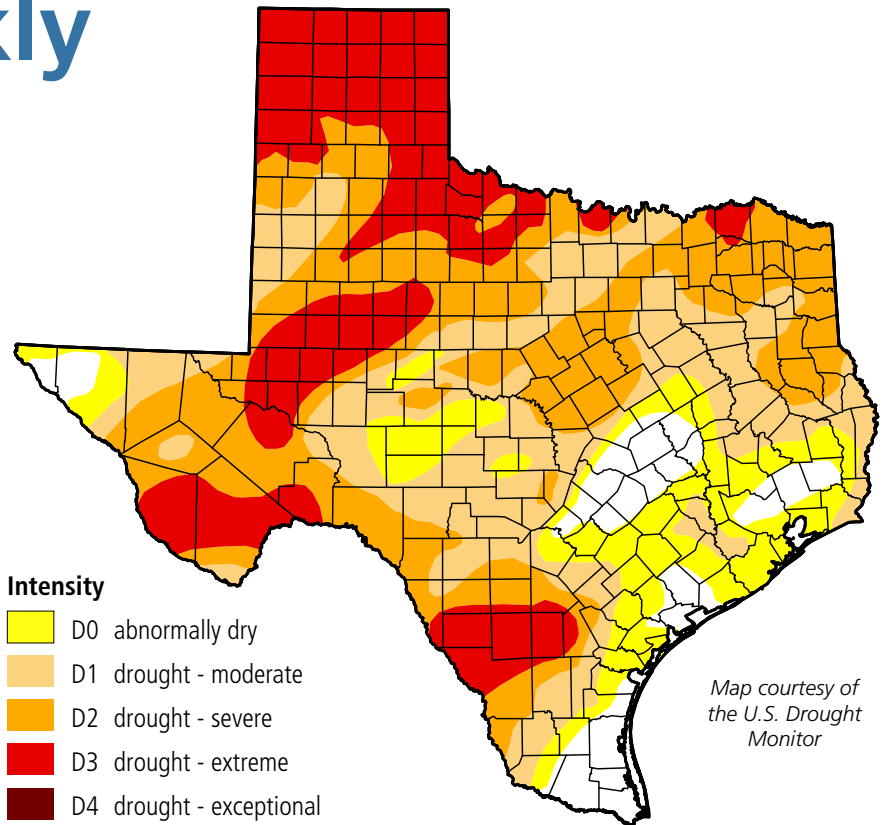
For the week of 02/28/22

Water conditions

The latest drought map for conditions as of February 22 shows an increase in the area of the state impacted by drought, the first week-over-week increase in four weeks. In comparison to a year ago, as we suffered through a similar La Niña winter, 51 percent of the state was in drought.

Drought conditions

- ◆ 79% now
- ◆ 78% a week ago
- ◆ 40% three months ago
- ◆ 51% a year ago



Written by Dr. Mark Wentzel — Dr. Mark Wentzel is a hydrologist in the TWDB's Office of Water Science and Conservation.

Bryan McMath, Governmental Relations | bryan.mcmath@twdb.texas.gov | 512-463-7850
 Kaci Woodrome, Media Relations | kaci.woodrome@twdb.texas.gov | 512-475-1720