

# Water Weekly

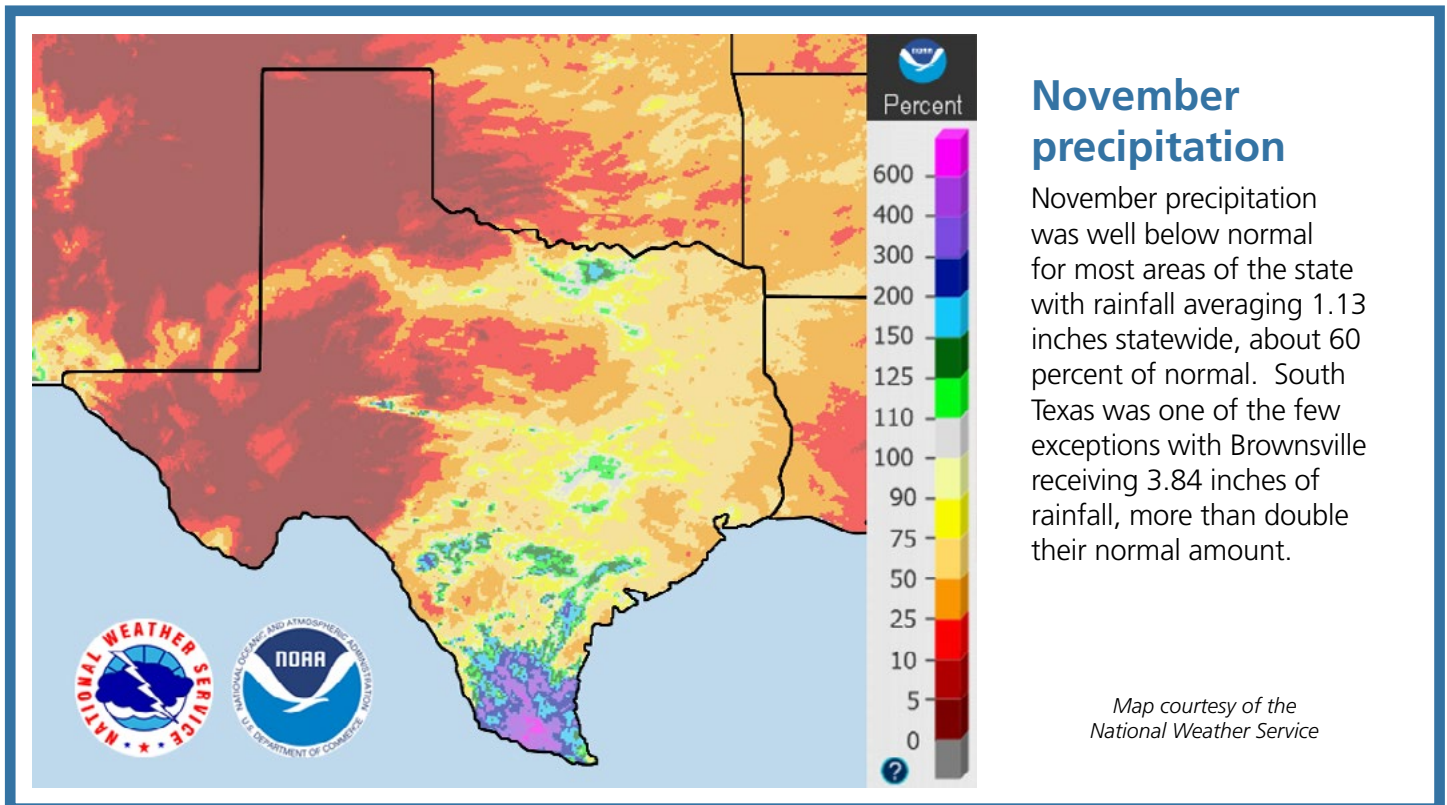
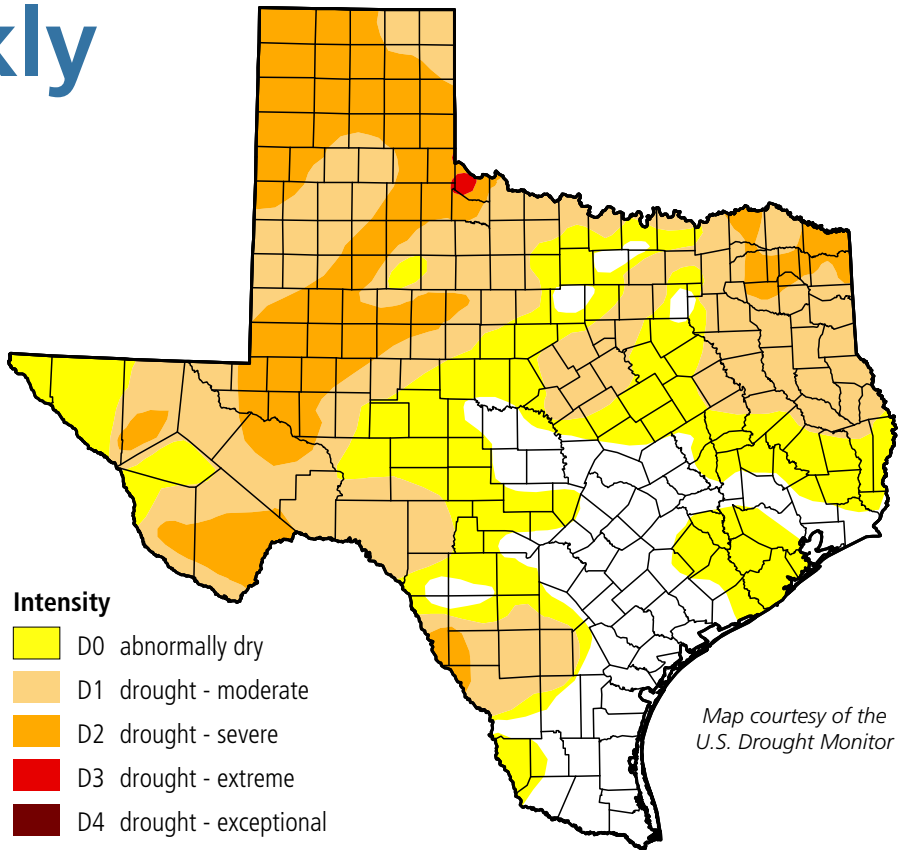
For the week of 12/13/21

## Water conditions

The latest drought map for conditions as of December 7 shows continued increases in both the areal extent and intensity of drought relative to previous weeks. Extreme drought has developed in Hardeman County, the first time drought of that intensity has impacted the state since late June.

## Drought conditions

- ◆ 55% now
- ◆ 49% a week ago
- ◆ 0.5% three months ago
- ◆ 79% a year ago



Written by Dr. Mark Wentzel — Dr. Mark Wentzel is a hydrologist in the TWDB's Office of Water Science and Conservation.

Bryan McMath, Governmental Relations | [bryan.mcmath@twdb.texas.gov](mailto:bryan.mcmath@twdb.texas.gov) | 512-463-7850  
Kaci Woodrome, Media Relations | [kaci.woodrome@twdb.texas.gov](mailto:kaci.woodrome@twdb.texas.gov) | 512-475-1720